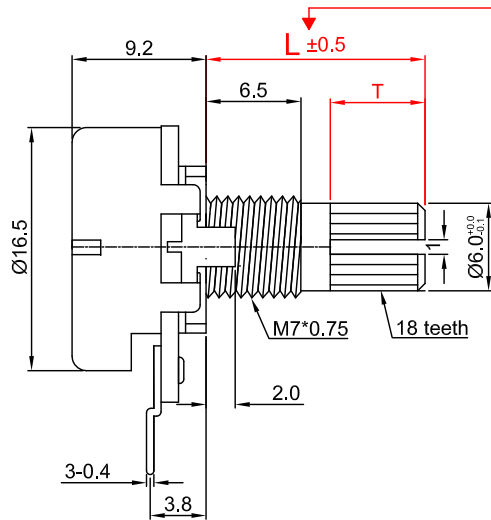


16mm common drawing

Model No. RD1610N-xA1- taper value



KQ type (Die-casting Shaft)

W=6.5mm

| | | | | | | | |
|---|-----|-----|-----|-----|------|----|----|
| X | 0 | 1 | 2 | 3 | 4 | 5 | 6 |
| L | 10 | 12 | 15 | 17 | 20 | 25 | 30 |
| T | 1.5 | 3.5 | 6.5 | 8.5 | 11.5 | 14 | 19 |

F type

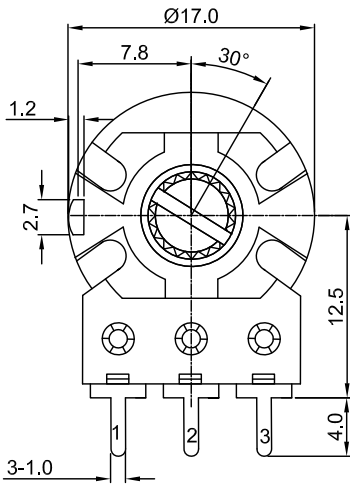
W=6.5mm

| | | | | | |
|---|----|----|----|-----|----|
| X | A | C | D | E | |
| L | 15 | 20 | 25 | 12 | 30 |
| F | 7 | 12 | 12 | 3.5 | 12 |

S type

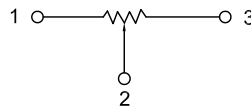
W=6.5mm

| | | | | | |
|---|----|----|----|----|----|
| X | P | Q | R | S | T |
| L | 10 | 15 | 20 | 25 | 30 |

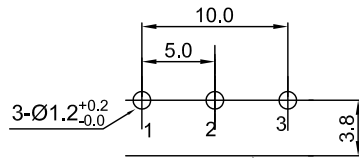


Shaft shown in full C.C.W. position

接线图
Circuit explanation

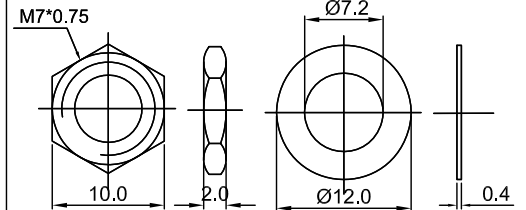


安装孔位置图
P.C.B. mounting hole detail



Mounting surface

Attached parts : nut & washer



YU WAH (D G) CO.,LTD

16 mm Rotary Potentiometers series Specifications

| 1.電氣性能 (Electrical Characteristics) | | |
|-------------------------------------|--|--|
| 1.1 | 全阻抗值 (Total Resistance) | 1K Ω ~ 2M Ω |
| 1.2 | 全阻抗值允許偏差 (Total Resistance Tolerance) | $\pm 20\%$ (More than 1 M Ω $\pm 30\%$) |
| 1.3 | 電阻隨溫度變化特性 Resistance of temperature change character) | 20 $^{\circ}$ C-75 $^{\circ}$ C: $\Delta R/R \leq \pm 5\%$, -25 $^{\circ}$ C-20 $^{\circ}$ C: $\Delta R/R \leq \pm 4.5\%$ |
| 1.4 | 阻值變化特性 (Resistance Taper) | A, B , C, W |
| 1.5 | 零位阻值 (Residual Resistance) | R \geq 250K Ω / 0.1 % max. of total Value 250K Ω >R>10K Ω / 20 Ω max. 10K Ω >R / 10 Ω max. |
| 1.6 | 額定功率 (Rated Power) | Linear Taper B: 0.2W Other Taper:0.1W |
| 1.7 | 最高使用電壓 (Max.Operating Voltage) | 150V AC |
| 1.8 | 動雜音 (Rotational Noise) | Less Than 100mV |
| 1.9 | 絕緣阻抗 (Insulation Resistance) | More than 100M Ω at DC 500V |
| 1.10 | 耐電壓 (Withstand Voltage) | For 1 minute at: AC 500V |
| 1.11 | 开关額定功率(Switch Rated Power) | ----- |
| 1.12 | 同步誤差 (Gang Error) | ----- |
| 2.機械性能 (Mechanical Characteristics) | | |
| 2.1 | 全回轉角度 (Rotation Angle) | 300 $^{\circ}$ \pm 10 $^{\circ}$ |
| 2.2 | 旋轉力矩 (Rotation Torque) | 20~200gf.cm |
| 2.3 | 軸的拉、押強度 (Pull-Push Strength) | 6 Kgf.cm |
| 2.4 | 轉動止檔強度 (Rotational Stop-End Torque) | 5 kgf.cm Min |
| 2.5 | 开关角度(Switch Working Angel) | ----- |
| 2.6 | 开关力矩(Switch Working Torque) | ----- |
| 2.7 | 旋轉定位數目 (Number of Detents(click)) | detent: 0 ; 1; 11; 21; 31; 41 |
| 2.8 | 焊錫耐熱性 (Resistance To Soldering Heat) | 260 \pm 5 $^{\circ}$ C and less than 3 seconds |
| 3.耐久性能 (Durability) | | |
| 3.1 | 回轉壽命 (Rotation Life) | 10,000 Cycles min. |
| 3.2 | 工作溫度 (Operating temperature) | -10 $^{\circ}$ C~+70 $^{\circ}$ C |
| 4.1 | 外形尺寸圖/曲線特性圖 (Shape size drawing/curve characteristic drawing) | 見附頁 Please refer the drawing |